

THOMSON REUTERS EIKON

GETTING STARTED GUIDE



CHAPTER 1 MACHINE PRE-REQUISITES

Refer to the Thomson Reuters Eikon PC Requirements document which is available on Customer Zone.

Link: <https://customers.thomsonreuters.com/pazdocsunauth/pazDocs.aspx?did=529318>



CHAPTER 2 STEPS TO INSTALL THOMSON REUTERS EIKON

Installing Thomson Reuters Eikon is a simple and straight forward process. In order to access the installation package, you need to have received your Thomson Reuters Eikon Welcome e-mail from Thomson Reuters. The e-mail contains your personalized identifier along with a unique address allowing you to activate your login on the Thomson Reuters Platform.

If you have received your Welcome e-mail and you have not yet activated your login, refer to the instructions included with the Welcome e-mail for the first steps to access Thomson Reuters Eikon.

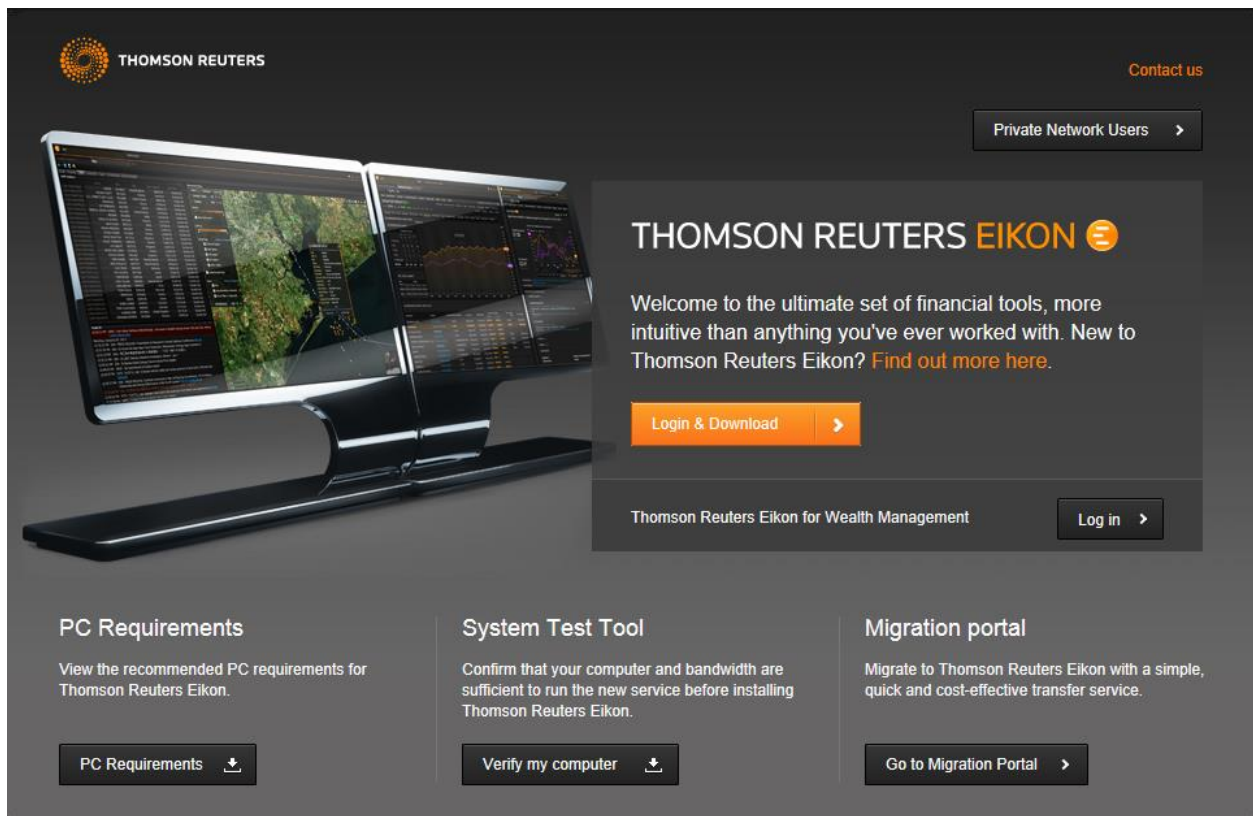
If you have not received the Welcome e-mail and you do not have a valid Thomson Reuters Eikon login, please contact Thomson Reuters. You cannot install the product without a valid login.

The Thomson Reuters Eikon installation package is available at the following address:
<https://customers.thomsonreuters.com/eikon/>

Use this page if you want to install the product at home or on a secondary workstation.

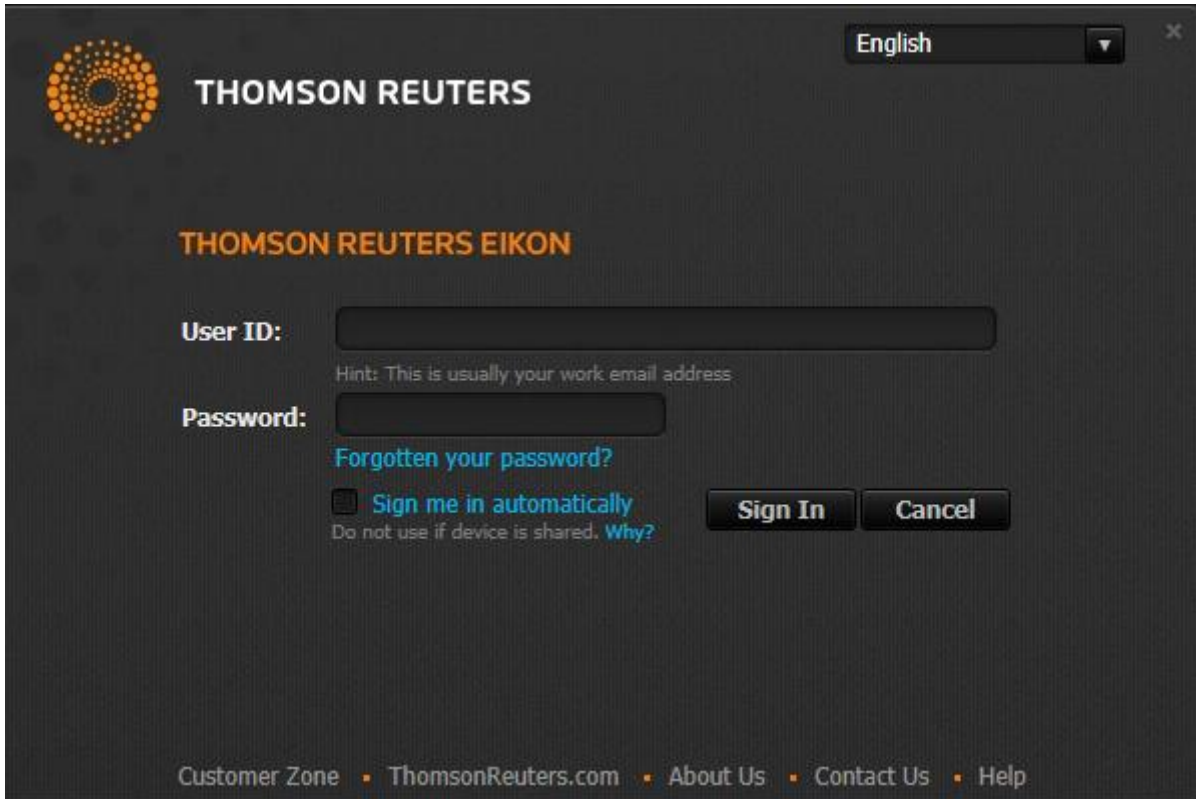
The installation process is described below. You will require a valid, activated, Thomson Reuters Eikon login.

From the main Thomson Reuters Eikon installation home page, click on the “Install Product” button to initiate the installation:

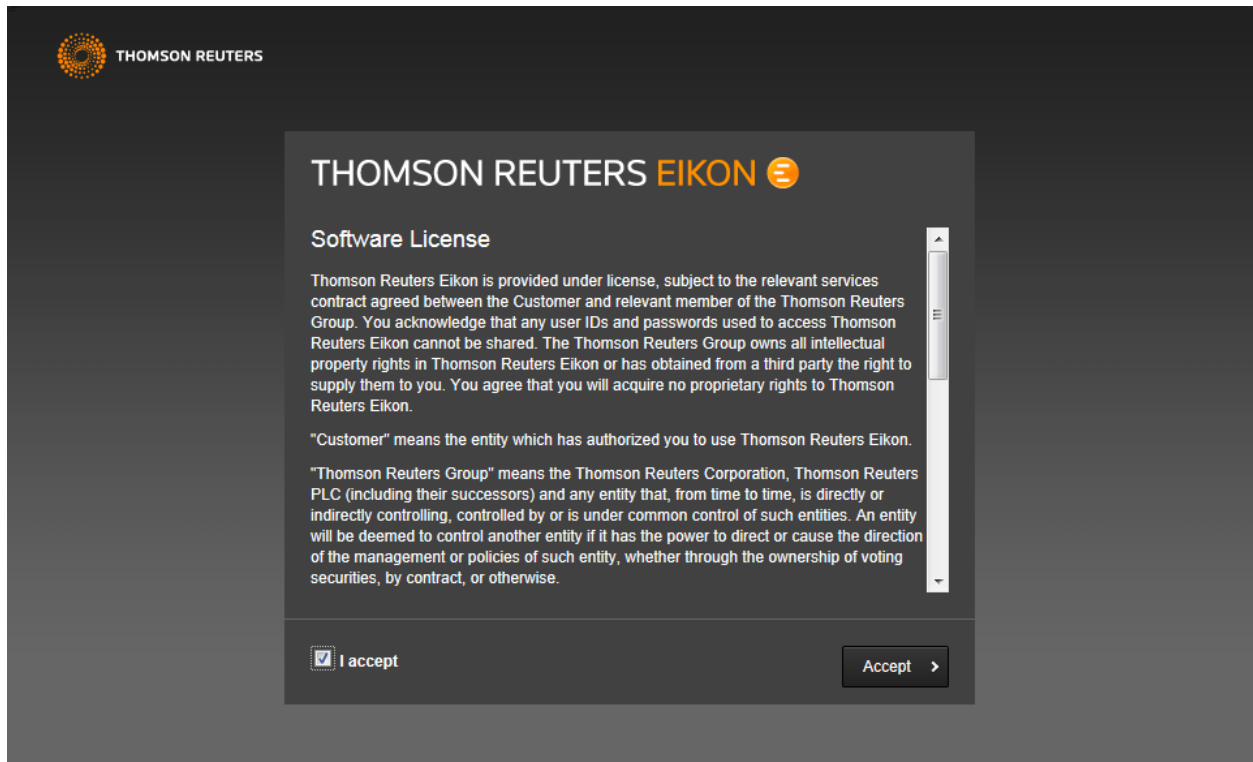


- Clicking on the “Login & Download” button will display the Thomson Reuters Platform sign-on page

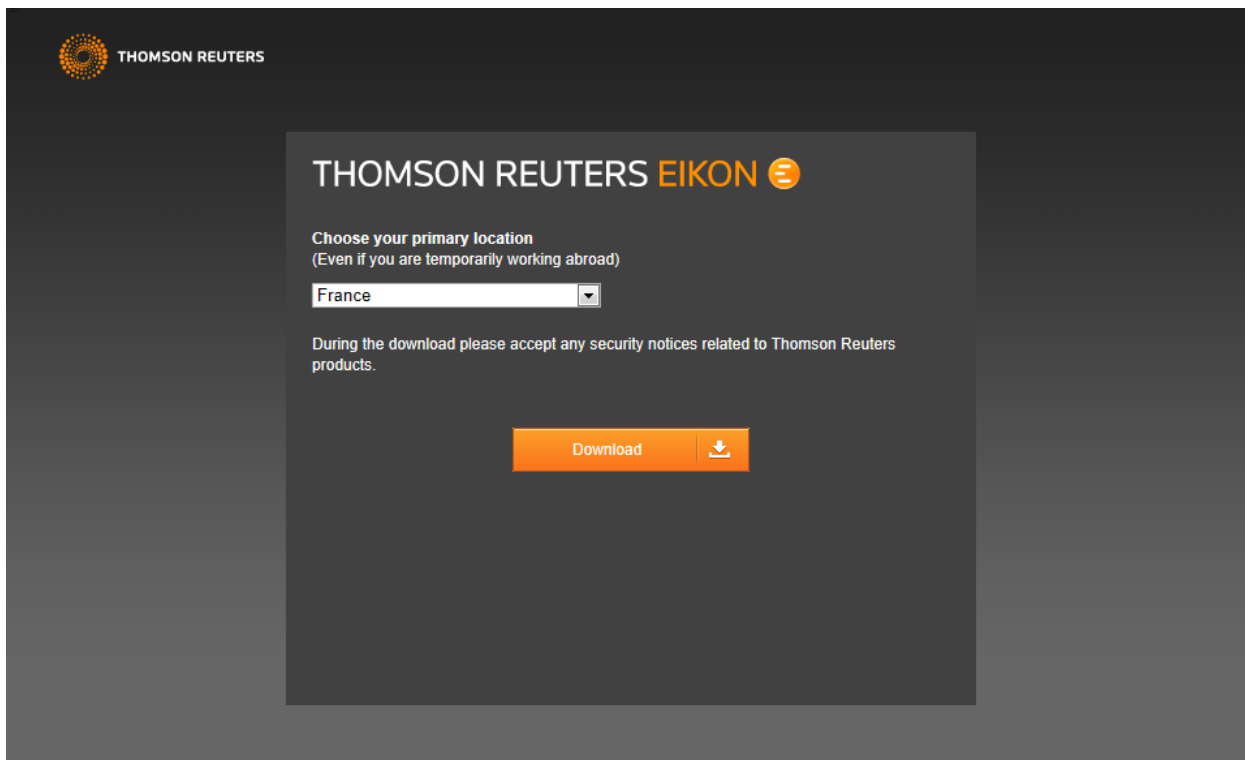




- Enter your valid ID and password and login to the platform. In case this is the first time you connect to Thomson Reuters Eikon, you should follow the instructions provided in your Welcome e-mail.
- You will be then redirected to the License agreement page.

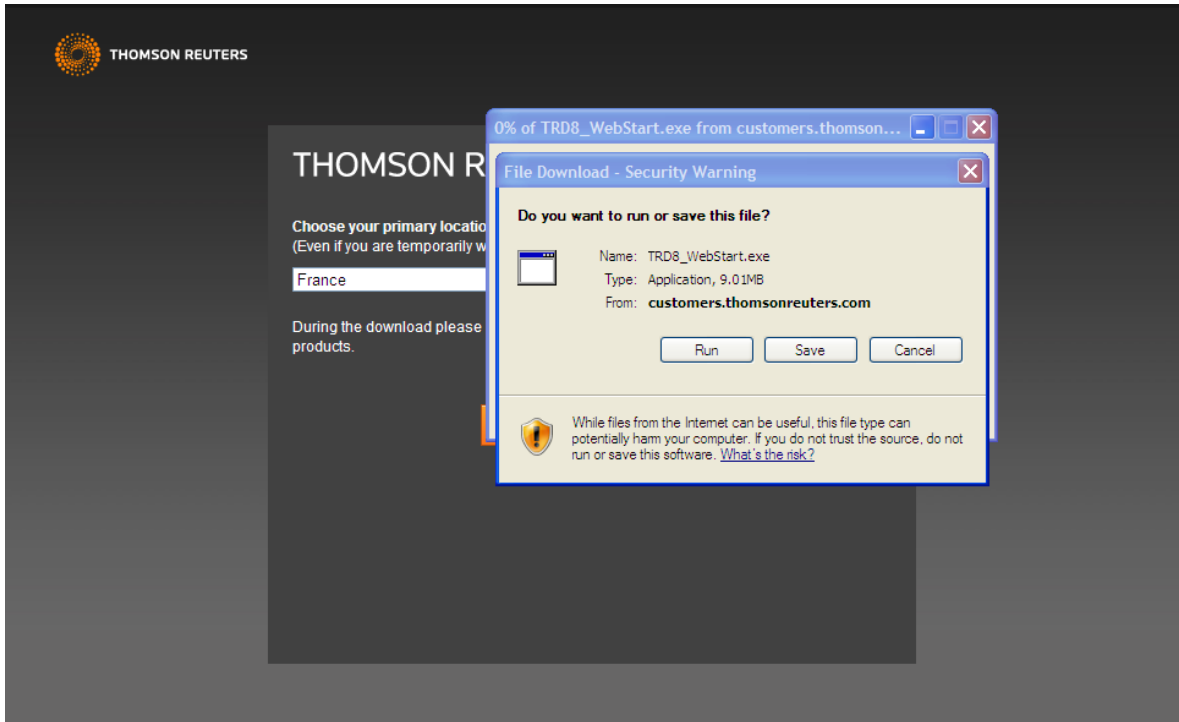


- Check “I accept” and click “Accept” to move on to the download page.
- Choose your primary office location from the drop down menu and then click on the “Download” button.
-

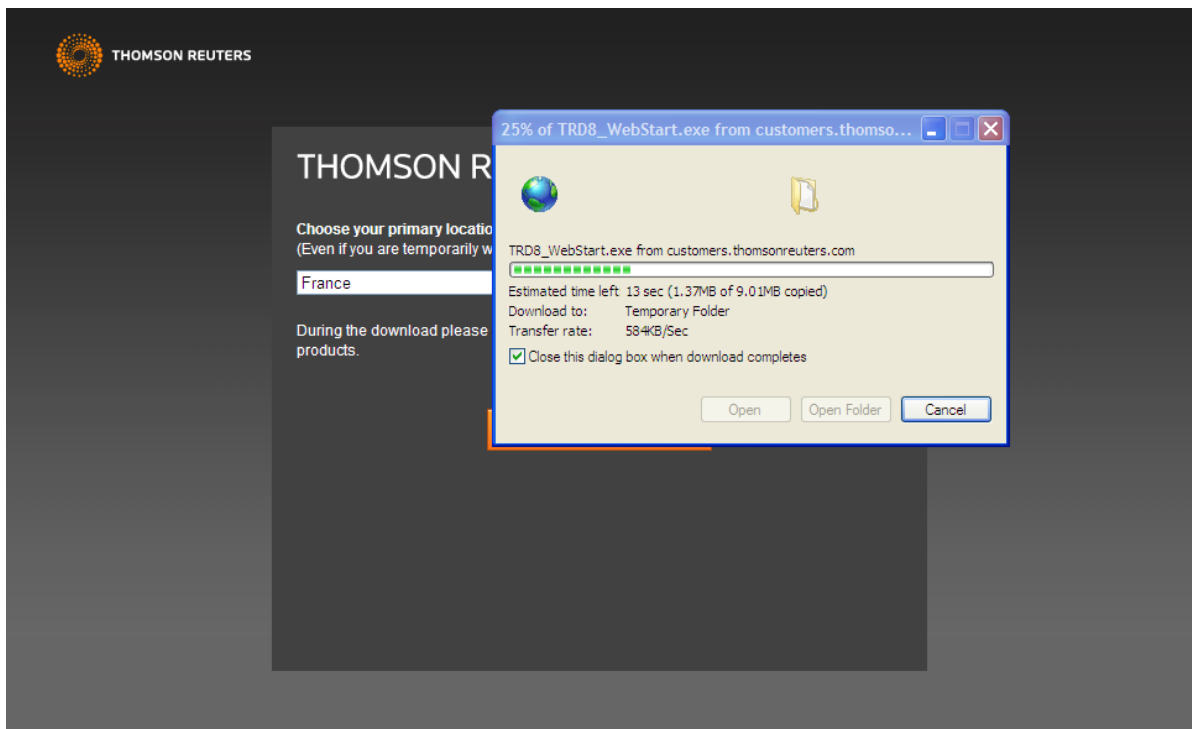


- The standard Internet Explorer file download message box is displayed as shown below
- Click on ‘Run’.
Note: If you are installing on Windows Vista or Windows 7 with User Access Rights activated the default installation is a per-user installation. If you want to perform a per-machine installation you should save the installation starter locally to your workstation and then right click on it and select “Run as administrator”.



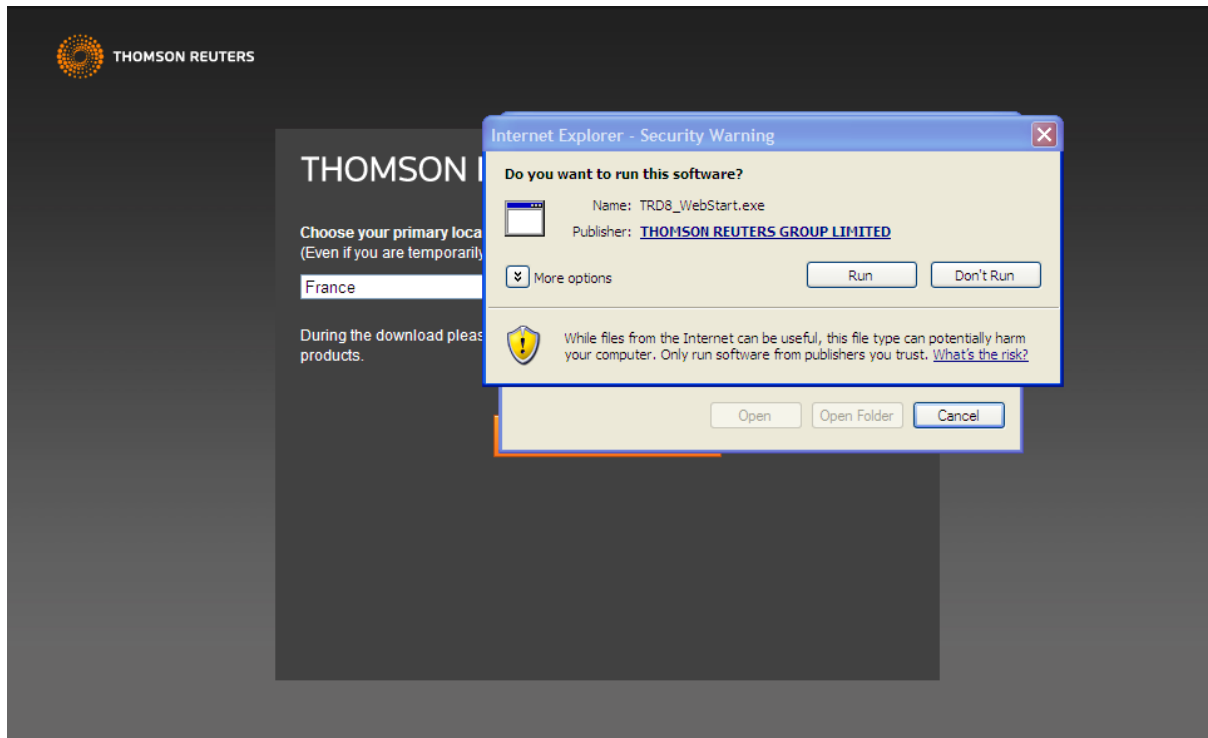


- The Eikon installer is downloaded locally to your workstation

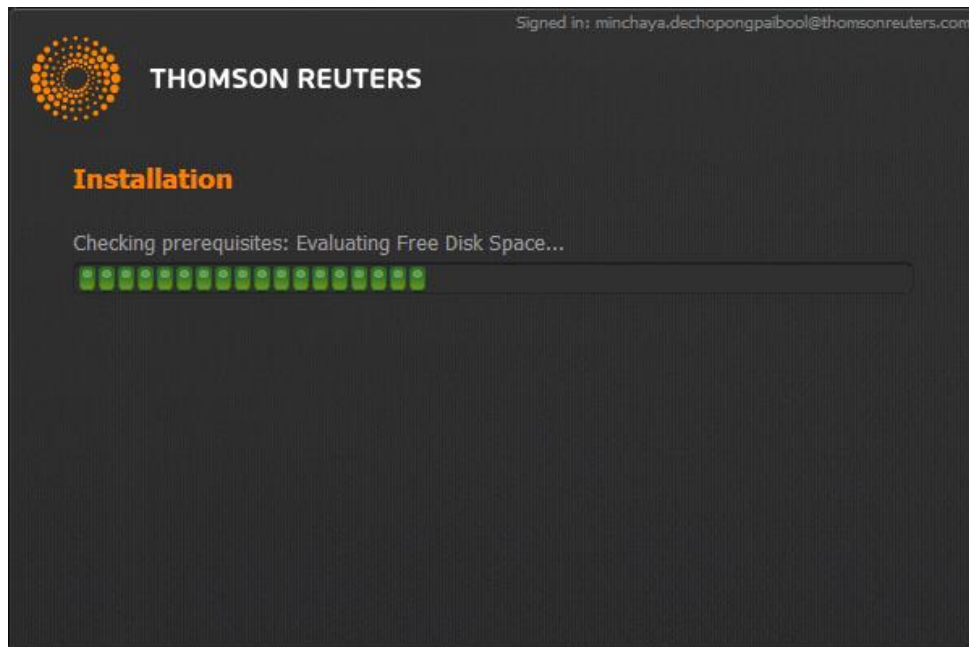


- Select the Run option on the Security Warning dialog



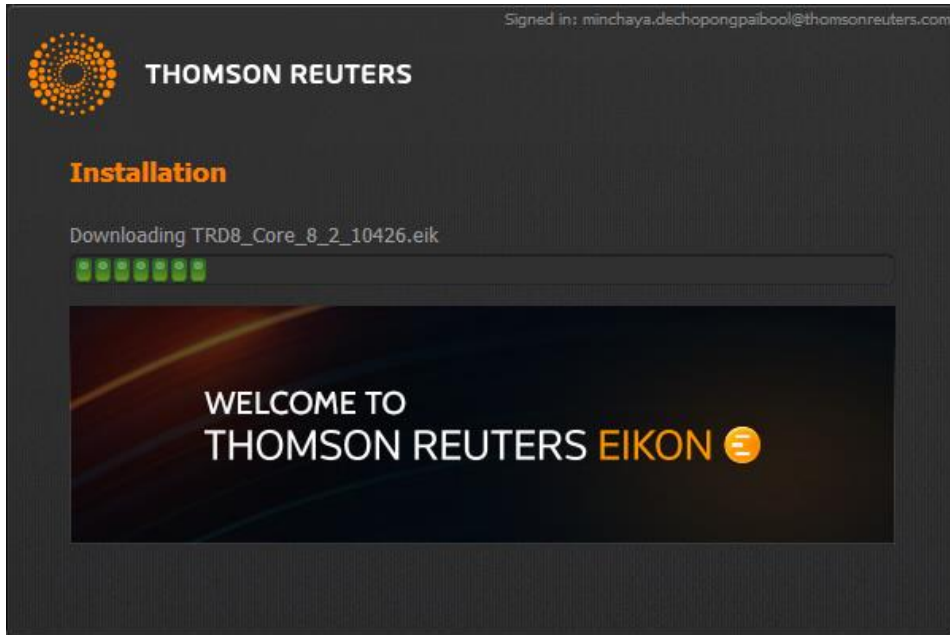


- The following screen will be displayed, showing that the System test tool is evaluating your system
- Some warning messages may be displayed if your system does not meet all the minimum software and hardware pre-requisites. If this happens, please follow the instructions displayed on the screen.

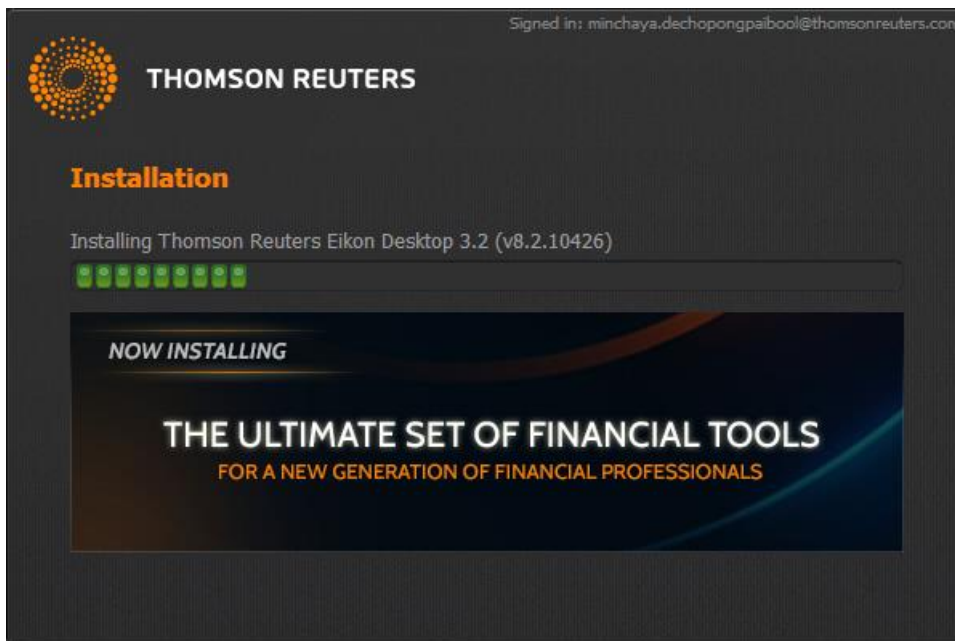


- The installation package is downloaded from the update service:



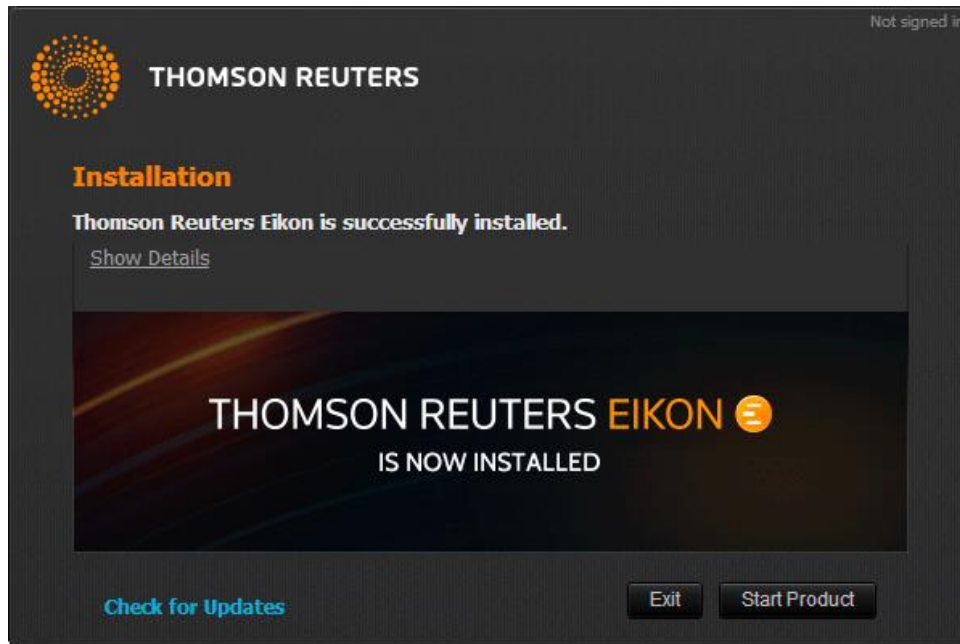


- The downloaded package is installed on your workstation



- At the end of the installation, if it was successful, you should see the following screen





- You can now start your Thomson Reuters Eikon desktop:

If Thomson Reuters Eikon did not install successfully, please use the Contact Us button located in the top right corner of this link: https://customers.thomsonreuters.com/eikon/product_page.html to report the problem.

© 2013 Thomson Reuters. All rights reserved.
Republication or redistribution of Thomson Reuters content, including by framing or similar means, is prohibited without the prior written consent of Thomson Reuters. 'Thomson Reuters' and the Thomson Reuters logo are registered trademarks and trademarks of Thomson Reuters and its affiliated companies.

For more information
Send us a sales enquiry at
http://thomsonreuters.com/about/contact_us
Read more about our products at
http://thomsonreuters.com/products_services
Find out how to contact your local office
<http://thomsonreuters.com/about/locations>

